

Info session – implementation of new storage regulation in regulated documents



13th September 2022

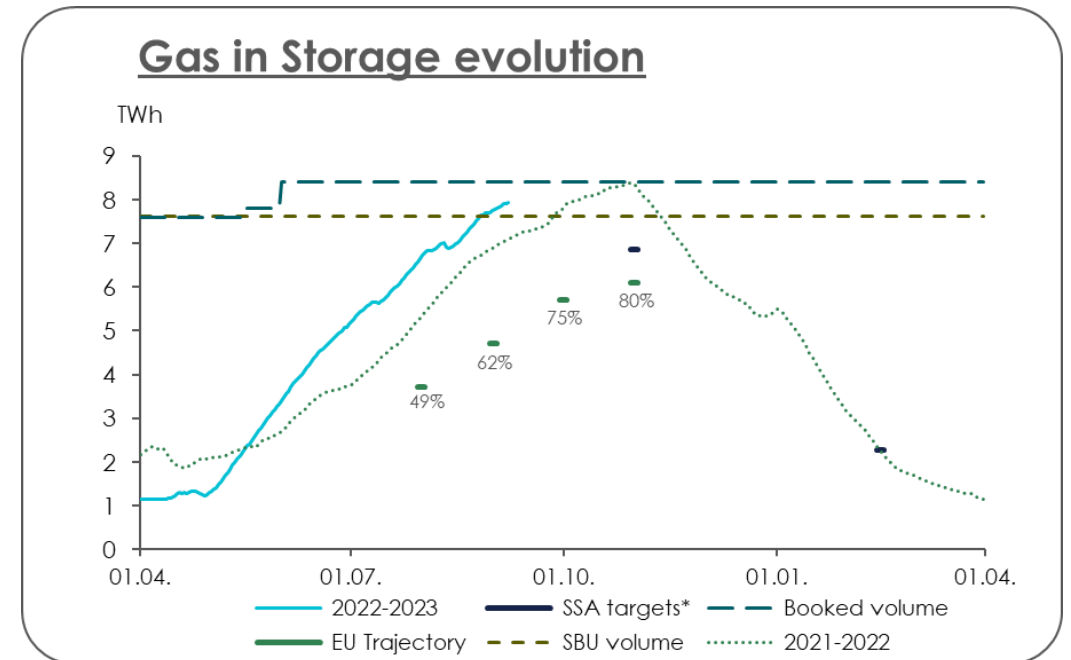
- Consultation ends on 19th of September
- Questions can be raised in the chat and will be handled after the presentation
- For further questions after this info session, reach out to our Key Account Managers

Regulation (EU) 2022/1032 for a **European gas storage policy** modifying 2 existing regulations on **Security of Supply for gas** and **access to natural gas transmission networks**

Objective: ensuring that storage capacities in the EU are filled before the winter season and can be shared between member states in a spirit of solidarity

Main elements

- **Filling obligation** (90% of SBU volume) and **filling trajectory**
 - Filling trajectory to be determined by Member States and validated by EU Commission
- Member States without storage to **fill 15% of their annual consumption** in other Member States or to develop **burden-sharing mechanisms**
- Measures to reach the filling target include a.o. **compensation** to shippers and SSOs (potentially via transmission tariff), **joint procurement** of LNG or gas, **UIOLI** and **storage obligation** for shippers
- ENTSOG to simulate the **disruption of a single supply source (S-1)**
- **Certification of SSOs** to avoid risk of external influence on storage infrastructures
- **Discount up to 100% on transmission tariffs** from/to storages
- Provisions applicable until **31/12/2025**, except for certification and S-1 simulation



* Filling targets defined in the regulated documents



In force since 30th June '22



European gas storage policy introduces the concept of Filling (Trajectory) Target

Filling Trajectory Targets Belgium (applicable from 01 April 2023)

Filling target

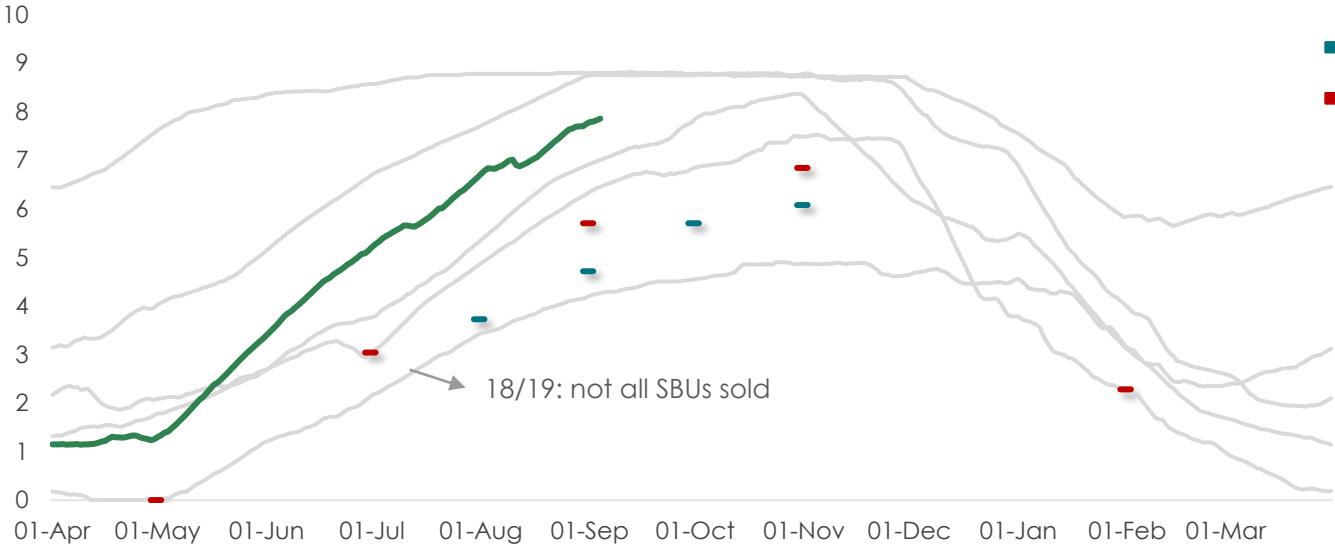


	01 Apr	01 May	01 Jun	01 Jul	01 Aug	01 Sept	01 Oct	01 Nov	01 Dec	01 Jan	01 Feb	01 Mar
2022					49%	62%	75%	80%				
2023 (proposal)		-		40%		75%		90%			30%	

Gas In Storage (GIS) percentages only applied on seasonal volume (=SBU)

From 2023 (instead of 15th of Feb)

Historical GIS evolution vs proposed Filling (Trajectory) Targets [TWh]



- GIS historical
- GIS 2022/2023
- Filling Targets 2022
- Filling Targets proposed from 2023



Different measures will be taken if Filling (Trajectory) Targets are not respected

Rules to be respected

Filling trajectory (replaces current 30%-rule on 15 Feb)

Penalty for shipper for each day not respecting the Filling Trajectory Targets

Filling target (replaces current 90%-rule on 01 Nov)

Capacity not able to meet the 90% (unutilized capacity) can be re-allocated

- Secondary Market
- Auction

Penalty for shipper for unutilized capacity

Measures foreseen

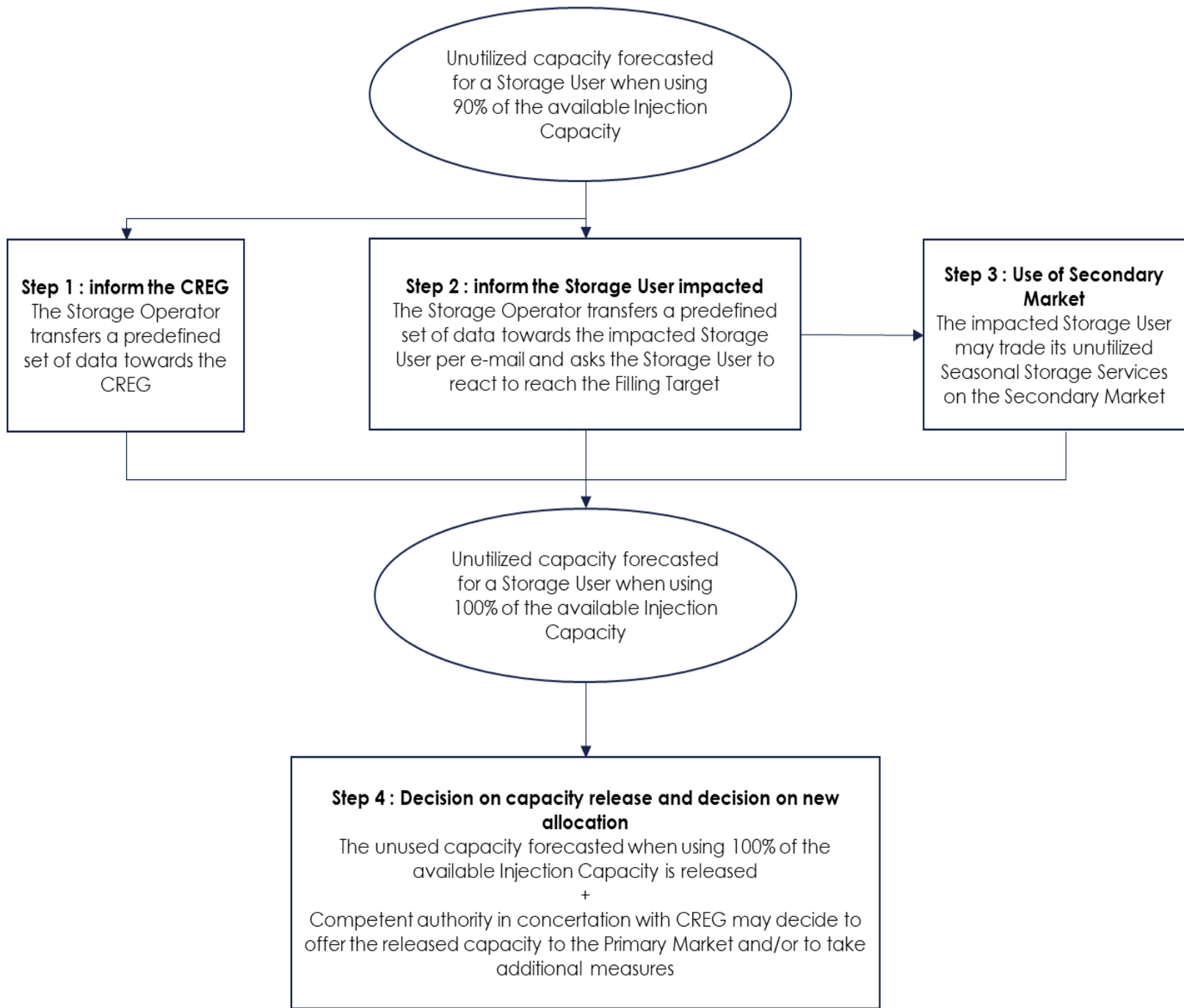
- Per day, **10% of ZTP** gas spot price per MWh below the trajectory (taking into account the 5% tolerance foreseen in regulation)

- **Released capacity** to be paid at the **regulated tariff** (at least)



- **other measures possible by Competent Authority**





Additional changes in regulatory storage documents

- ▶ Not possible to terminate storage contract in same storage year
 - In case of termination SBUs (for future storage years) -> minimum regulated tariff* need to be paid for terminated SBUs
- ▶ Default SBU removed (= no more 'conditional capacity')
- ▶ New allocation rule when selling capacity by means of 'auction form':
 - Highest Duration x bid x capacity has priority

All changes will be applicable as from next storage year (1st April 2023)

*If shipper bought SBUs via auctions at cleared price higher than regulated tariff, the cleared price shall be invoiced



Next steps

