

Information Memorandum Proposal for CO₂ infrastructure: Liège



Fluxys Belgium

December 2021



Contents

1. Project in the area of Liège	2
2. Enter into Expression of Interest	3

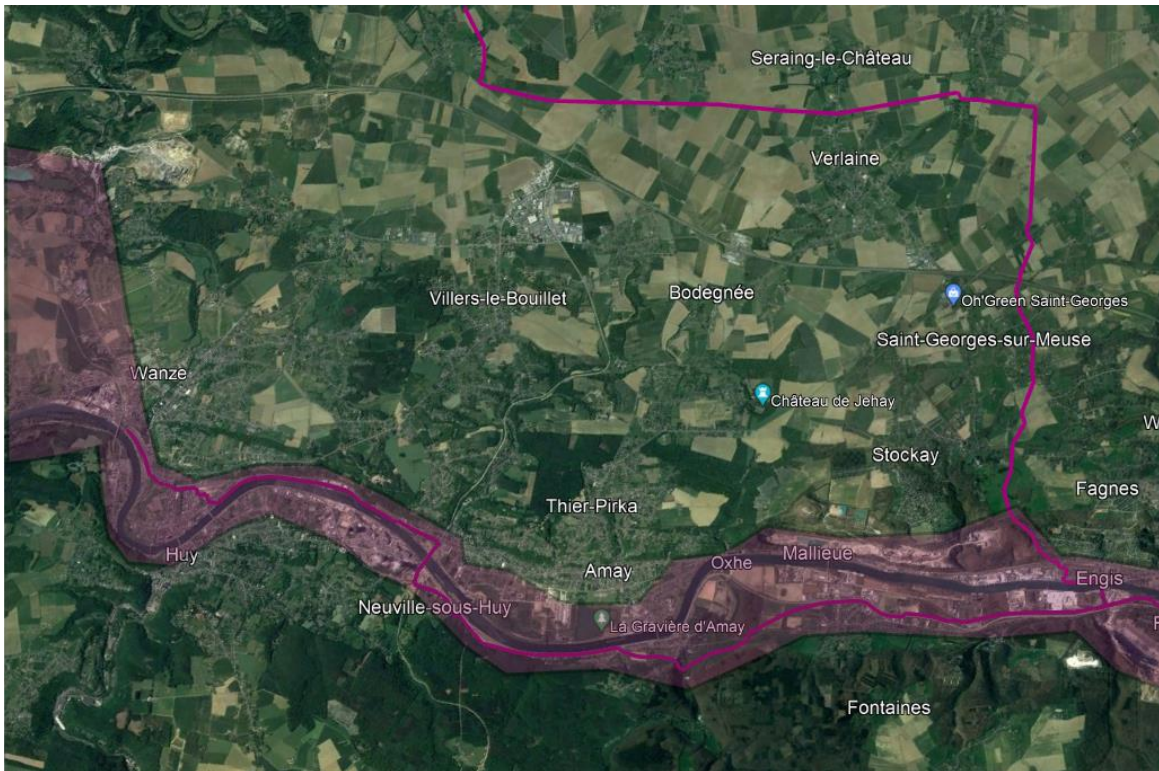
Disclaimer

This document (the “Information Memorandum Proposal for CO₂ infrastructure: Liège”) sets forth certain information regarding the transportation of CO₂ which is considered as a solution to achieve the targets of decarbonisation. The information contained in this document reflects the point of view of Fluxys at this stage and is publicly disclosed for information purposes only and without any commitment whatsoever from Fluxys, and should not be considered to give rise to any contractual relationship between Fluxys and any interested party.

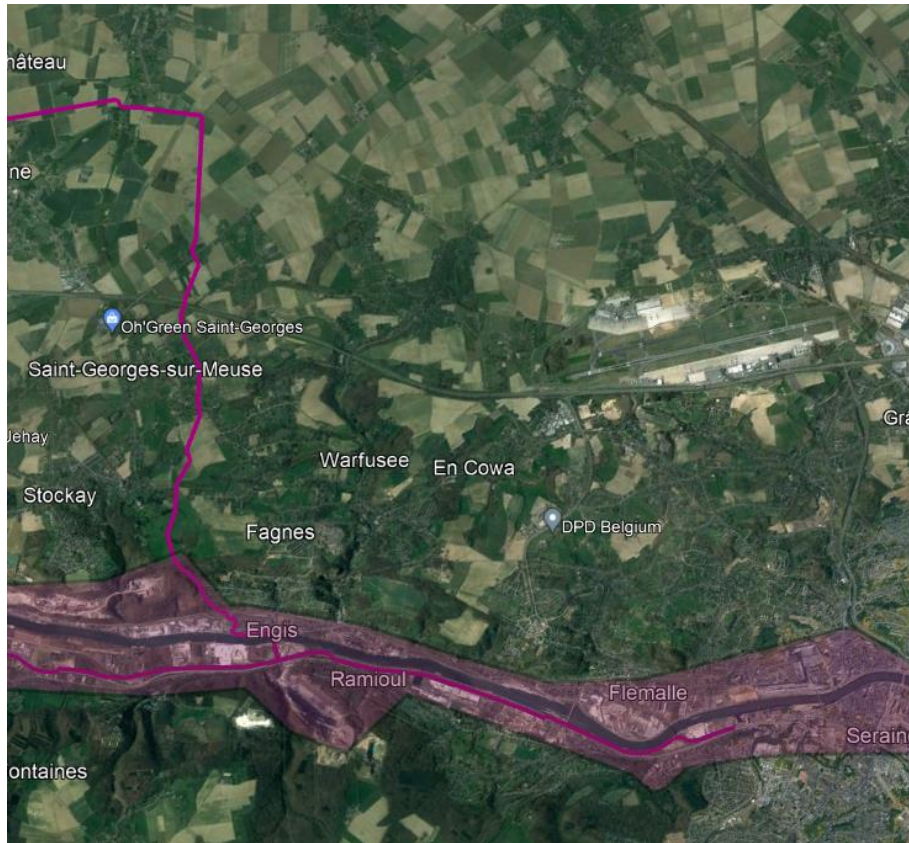
1. Project in the area of Liège

Following the Request For Information, the market expressed a mature need for open access CO₂ infrastructure between the area of Liège and the Belgian Coastal region. Fluxys has therefore worked out a specific CO₂ network proposal within the requested coverage area, taking market demand into account as well as existing infrastructure and potential future demand. The proposal, as depicted below, encompasses infrastructure able to collect and transport CO₂ from the coloured area towards one of the exit points as defined in the Information Memorandum for CO₂ Infrastructure, available on Fluxys' website.

The routing of the pipeline within the proposed Liège area cluster is mainly following the river Meuse and covers the region between Seraing in the East, along Flémalle, Ivoz-Ramet, Engis, Amay, Tihange and up to Wanze in the West. The pipeline heading towards the coastal region is leaving the cluster northbound abeam Engis.



The above described pipeline routing must be seen as indicative, but gives a clear overview of the most probable CO₂ network development in the area of Liège, and therefore the highest likelihood to have an easy access to the network from within the proposed coverage area (coloured).



Specific market's demand, also outside the proposed coverage area, can alter or extend the routing.

The necessary dimensioning of the network and the according capacity, as well as the timing and phases will be further defined during the Open Season. The above described pipeline routing must be seen as indicative and may alter throughout the Open Season based upon participants feedback.

2. Enter into Expression of Interest

Please fill out the online [Participation Form](#)
