

Information Memorandum Proposal for CO₂ infrastructure: Namur



Fluxys Belgium

September 2022



Contents

1. Project in the area of Namur	2
2. Enter into Expression of Interest	3

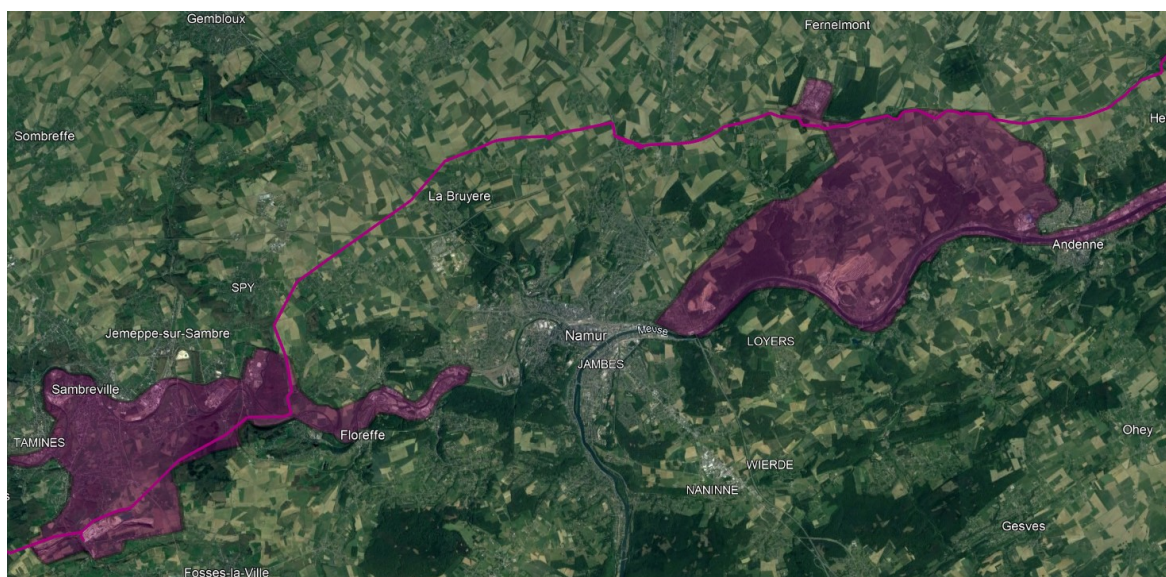
Disclaimer

This document (the “Information Memorandum Proposal for CO₂ infrastructure: Namur”) sets forth certain information regarding the transportation of CO₂ which is considered as a solution to achieve the targets of decarbonisation. The information contained in this document reflects the point of view of Fluxys at this stage and is publicly disclosed for information purposes only and without any commitment whatsoever from Fluxys, and should not be considered to give rise to any contractual relationship between Fluxys and any interested party.

1. Project in the area of Namur

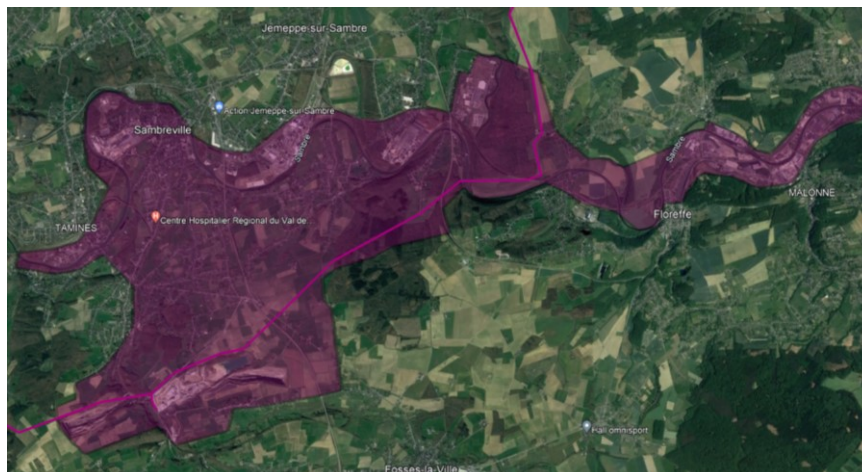
The first proposals published in December 2021 and the subsequent process of Expression of Interest have triggered additional market appetite in Wallonia and incentivised Fluxys to review the existing proposal with additional infrastructure.

Fluxys has therefore worked out a specific CO₂ network proposal within the requested coverage area around Namur, taking market demand into account as well as existing infrastructure and potential future demand. The proposal, as depicted below, encompasses infrastructure able to collect and transport CO₂ from the coloured area towards one of the exit points as defined in the Information Memorandum for CO₂ Infrastructure, available on Fluxys' website.

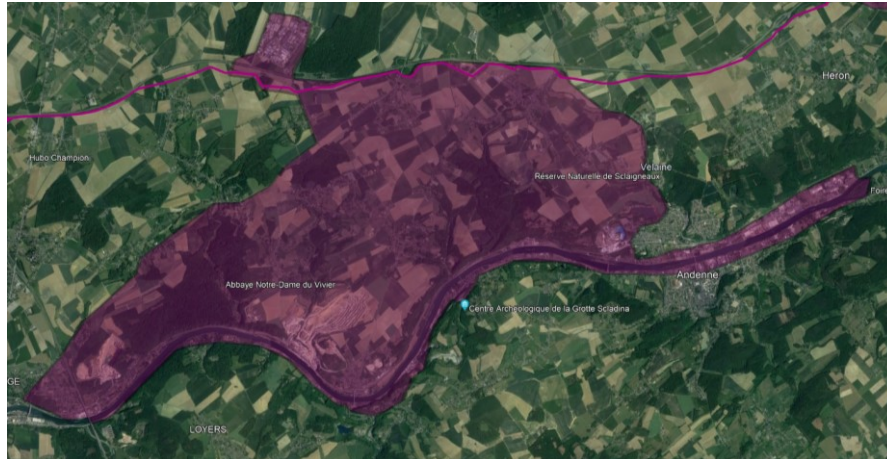


The proposed pipeline is between the clusters of Charleroi and Liege (previously published) and interconnected, and hence collects CO₂ within Namur, Liège, Charleroi and Mons to have it transported to one or more predefined exit points such as Zeebrugge, Ghent or Antwerp. Along the routing around Namur, the cluster is divided in two areas:

- West of Namur, from Sambreville, over Jemeppe-sur-Sambre towards Floreffe



- East of Namur, covering the area between the Meuse river and the E42, ultimately connecting to the already published cluster west of Liege.



The above described pipeline routing must be seen as indicative, but gives a clear overview of the most probable CO₂ network development in the area of Namur, and therefore the highest likelihood to have an easy access to the network from within the proposed coverage area (coloured).

Specific market's demand, also outside the proposed coverage area, can alter or extend the routing.

The necessary dimensioning of the network and the according capacity, as well as the timing and phases will be further defined during the Open Season. The above described pipeline routing must be seen as indicative and may alter throughout the Open Season based upon participants feedback.

2. Enter into Expression of Interest

Please fill out the online [Participation Form](#)
